

KITSON TANK INSTRUCTIONS

Fig. 1.

Remove the castings from the packets. Check them over and clean off any flash or mould lines present. You can glue or solder the parts together (it would be best to glue smaller parts in place). If you are in any doubt about the positioning of the parts, consult the photograph on the front of the box.

Fit the 8BA nuts (28) over the holes in the footplate (1) [alternatively put the screws into the holes from the top]. Fit the springs (20 & 21) and the sandbox fillers (22 & 23) into the holes in the footplate as shown.

Assemble the cab next. Fit the cab front (2), (with the round mounting section outside the cab), to the cab sides (4 & 5). The front fits in behind the block on the cab sides, make sure it fits square. Fit the cab rear (3) to the cab sides, this locates against the lugs behind the cab doorway. This assembly can now be fitted to the footplate. The lugs on the cab front fit into the recess in the footplate. Glue the backhead (6) in place. Leave the cab roof (9) until last so that you can paint the inside of the cab.

Glue/solder the saddle tank top (7) to the tank rear/boiler section (8). Fit the smokebox front (12) to the saddle tank (7) and the smokebox sides (13 & 14) to the smokebox front. Next the underboiler parts (10 & 11) can be glued in place. They fit onto part 8 as indicated. Glue the clack piping (18 & 19) into the front holes on the underboiler castings. Glue the water balance pipes (16 & 17) into the rear holes on the underboiler castings and over the top of the clack piping. The boiler unit can now be attached to the footplate. The rear rests on the round mounting on the front of the cab. The smokebox locates over the rectangular mount at the front of the footplate. The clack piping goes into the two holes behind the springs.

The smokebox door (15) can now be fitted. The whistle (31) fits into the centre hole on the cab front. The safety valves (32) fit either side of the whistle. The sandboxes (24 & 25) fit into the holes under the cab (the pipes face forward). Assemble the etched nickel silver steps (26 & 27) and fit in behind the buffer beams. Glue the tank filler (34), chimney (33) and dome (29) in position.

Fig. 2.

Cut out the mainframes (1), rear frame spacer (2), front frame spacer (4) and cylinders (3). Solder the chassis bearings (5) into the holes in the frames. Fold the chassis sides up square. Fit the rear frame spacer into the recesses at the rear of the chassis. Fold the cylinders to shape and curve the sides to match the front and rear. Solder around the seams and fit to the chassis. Fit the front frame spacer over the cylinders.

Assemble the brakes (7 & 8), making two left hand and two right hand. Pass wire (6) through the pilot holes in the chassis and then attach the brakes to the wire about 2mm from the chassis. Pass wire through the bottom holes in the brakes and then through the two brake rods (9) and then the brakes on the other side. Solder these parts together.

It is best to paint the chassis now.

You can now fit the wheels (supplied) and gears (not supplied – Markits 50-1 gearbox is recommended). Fold the slidebars (10) as shown. Fit the motion brackets (11) to the slidebars. Test the crossheads to see if they run smoothly in the slidebars. Fit the slidebars into the slots in the back of the cylinders. Screw the crankpins (not supplied) into the wheels. Solder the two parts of the coupling rods (12) together and fit to the wheels. Attach the crossheads (14) to the connecting rods (13) with the 14BA nuts and screws (15). Position the crossheads in the slidebars and fit the connecting rods to the rear wheel crankpins.

Body Parts List

- | | |
|-----------------------------|--------------------------|
| 1. Footplate. | 21. R/H Spring. |
| 2. Cab Front. | 22. L/H Sandbox Filler. |
| 3. Cab Rear. | 23. R/H Sandbox Filler. |
| 4. L/H Cab Side. | 24. L/H Sandbox. |
| 5. R/H Cab Side. | 25. R/H Sandbox. |
| 6. Backhead. | 26. Front Steps. |
| 7. Saddle Tank. | 27. Rear Steps. |
| 8. Tank Rear/Boiler. | 28. 8BA Nuts and Screws. |
| 9. Cab Roof. | 29. Dome. |
| 10. R/H Underboiler. | 30. Buffers. |
| 11. L/H Underboiler. | 31. Whistle. |
| 12. Smokebox Front. | 32. Safety Valves. |
| 13. L/H Smokebox Side. | 33. Chimney. |
| 14. R/H Smokebox Side. | 34. Tank Filler. |
| 15. Smokebox Door. | |
| 16. L/H Water Balance Pipe. | |
| 17. R/H Water Balance Pipe. | |
| 18. L/H Clack Piping. | |
| 19. R/H Clack Piping. | |
| 20. L/H Spring. | |

Chassis Parts List

- | | |
|--|---------------------------|
| 1. Mainframes. | 10. Slidebars. |
| 2. Rear Frame Spacer. | 11. Motion Brackets. |
| 3. Cylinders. | 12. Coupling Rods. |
| 4. Front Frame Spacer. | 13. Connecting Rods. |
| 5. Chassis Bearings ($\frac{1}{8}$ th). | 14. Crossheads. |
| 6. Brass Wire. | 15. 14ba Nuts and Screws. |
| 7. Brake Hangers. | 16. Balance Weights. |
| 8. Brake Blocks. | |
| 9. Brake Rods. | |

P.D.K MODELS

**HILLTOP BUNGALOW.
CARNKIE
HELSTON
TR13 0DZ**

07732213251

www.pdkmodels.co.uk

E-Mail: pdkmodels@hotmail.co.uk

FIG. 1. ASSEMBLING THE BODY.

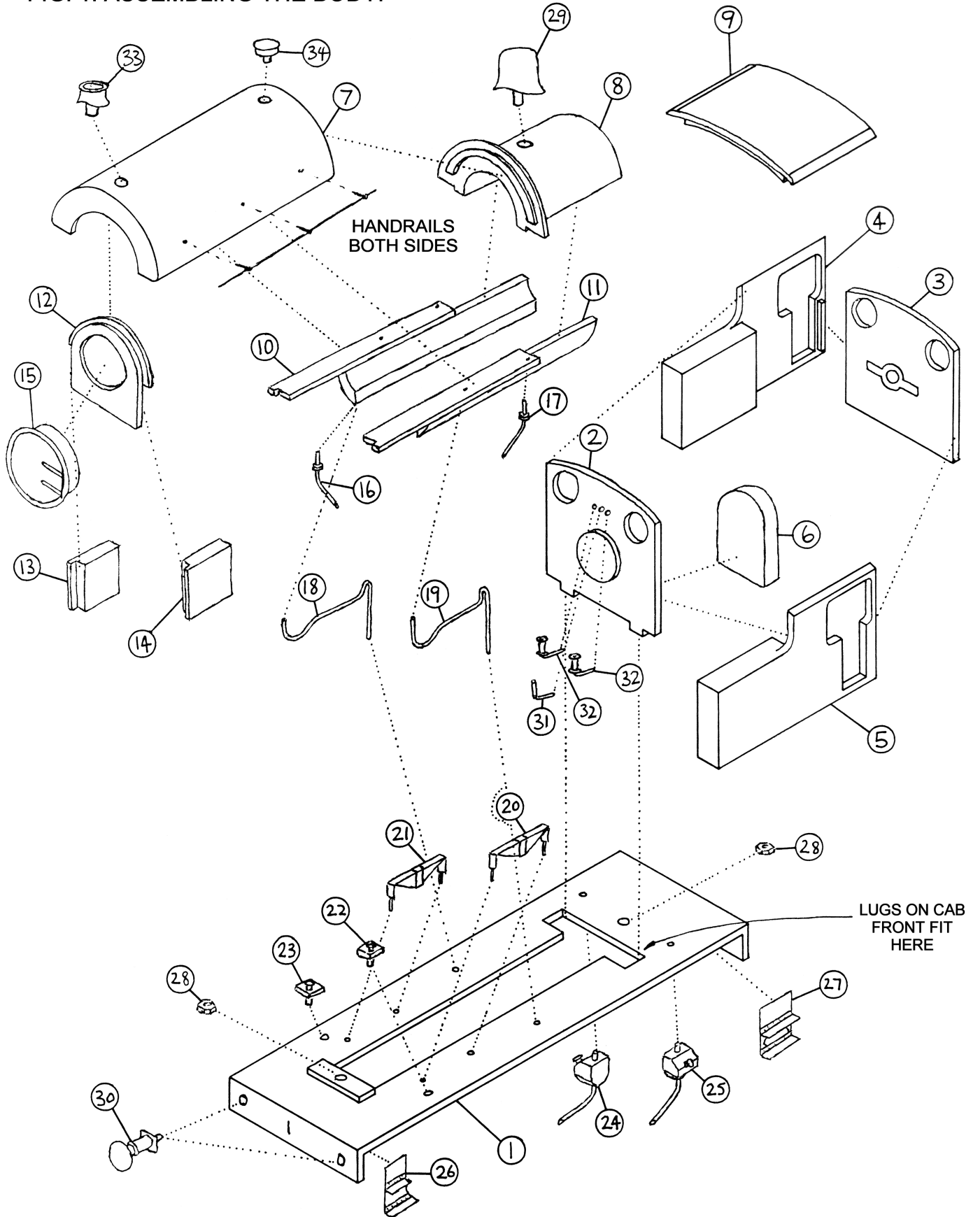


FIG. 2. CHASSIS ASSEMBLY.

